

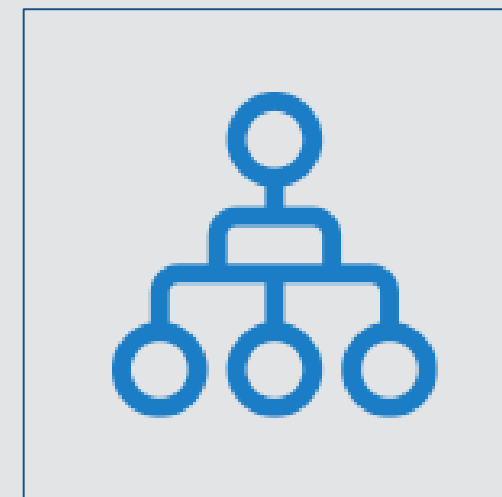


Champion's Workshop

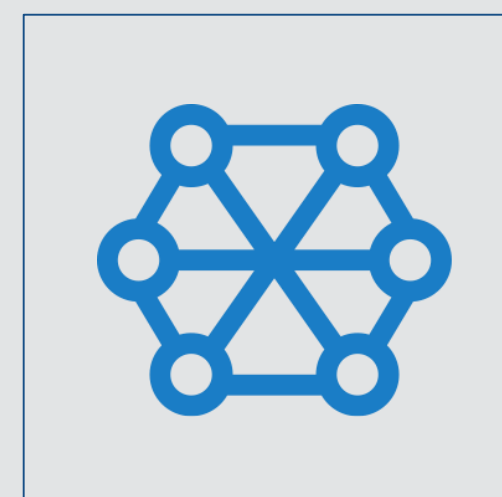
Purpose and expectations of today's session



To define the
role of the
Champion



To explore and share
ways to implement The
Leadership Framework
and associated materials
in your organisation



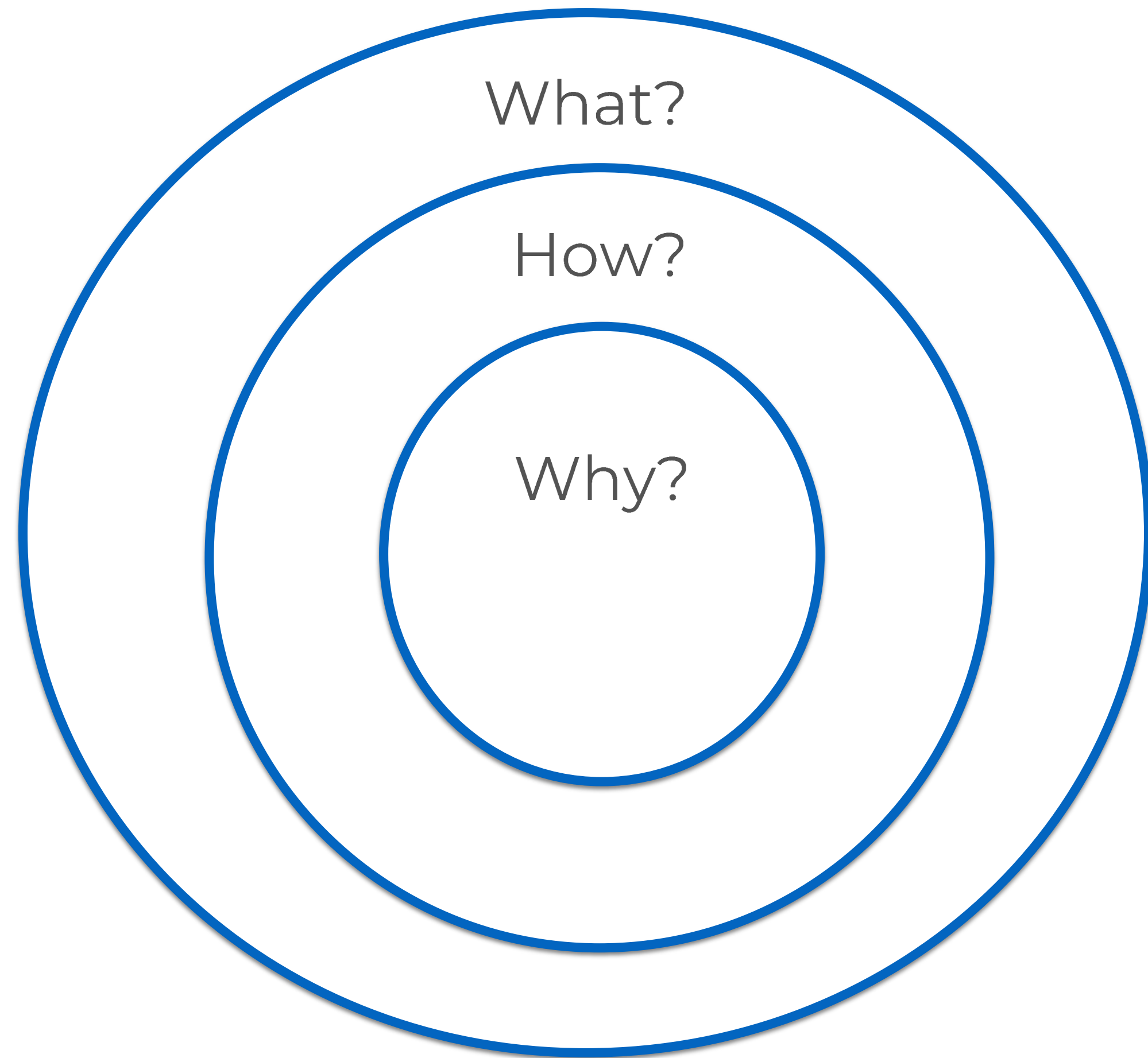
Examine what will
support you and what
will hinder you and how
to use this knowledge to
build success



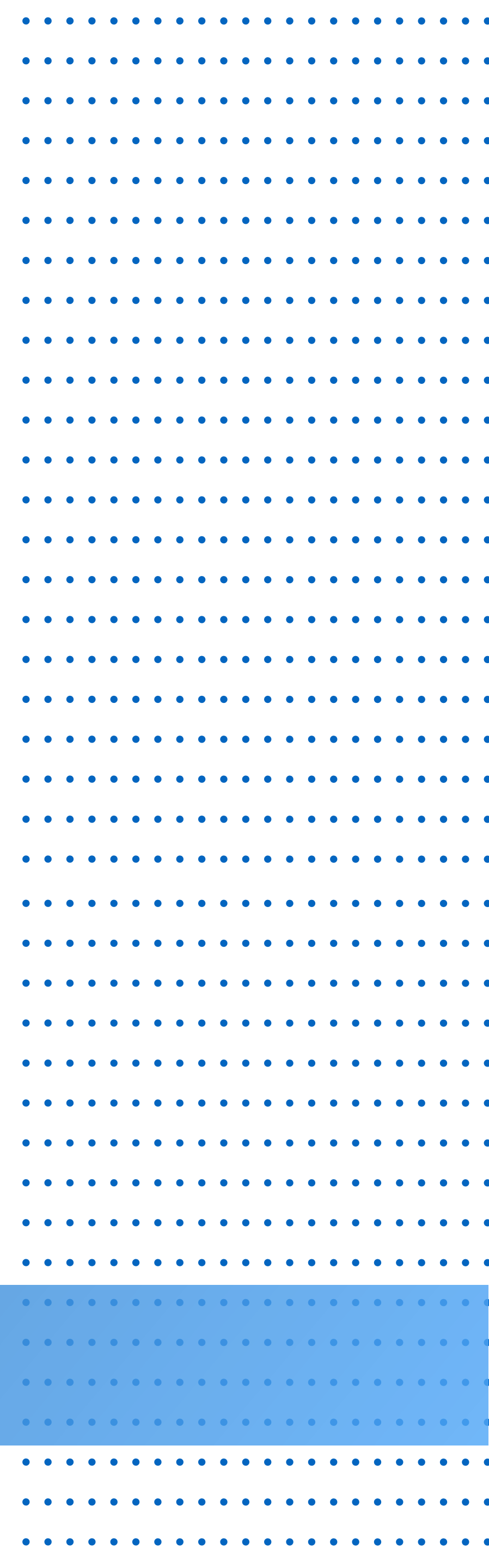
Mind Splats

Complete a mind-splat on:

1. The Sports and Recreation Leadership Framework
2. The Sport and Recreation resources
3. Common questions or unknowns



Your Why?



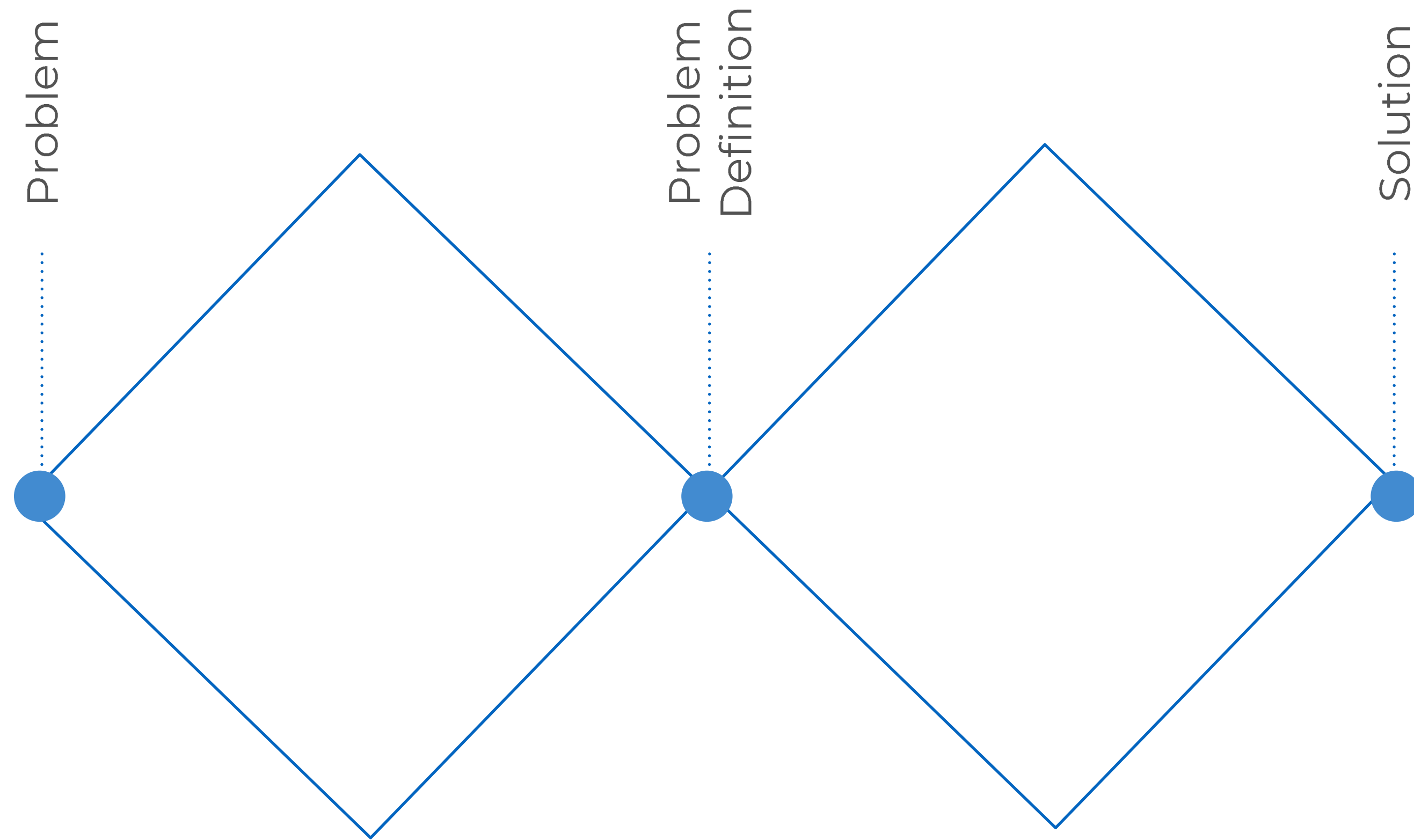


Expectations of the Champion

- 01 Support the Managers to be effective coaches.
- 02 Encourage self-development amongst team members.
- 03 Keep The Leadership Framework 'top-of-mind' and 'real' for your organisations

Your role is

- How can you achieve these things?
- What specific actions will you take to be effective in your organisation?



Discover - Define - Develop - Deliver

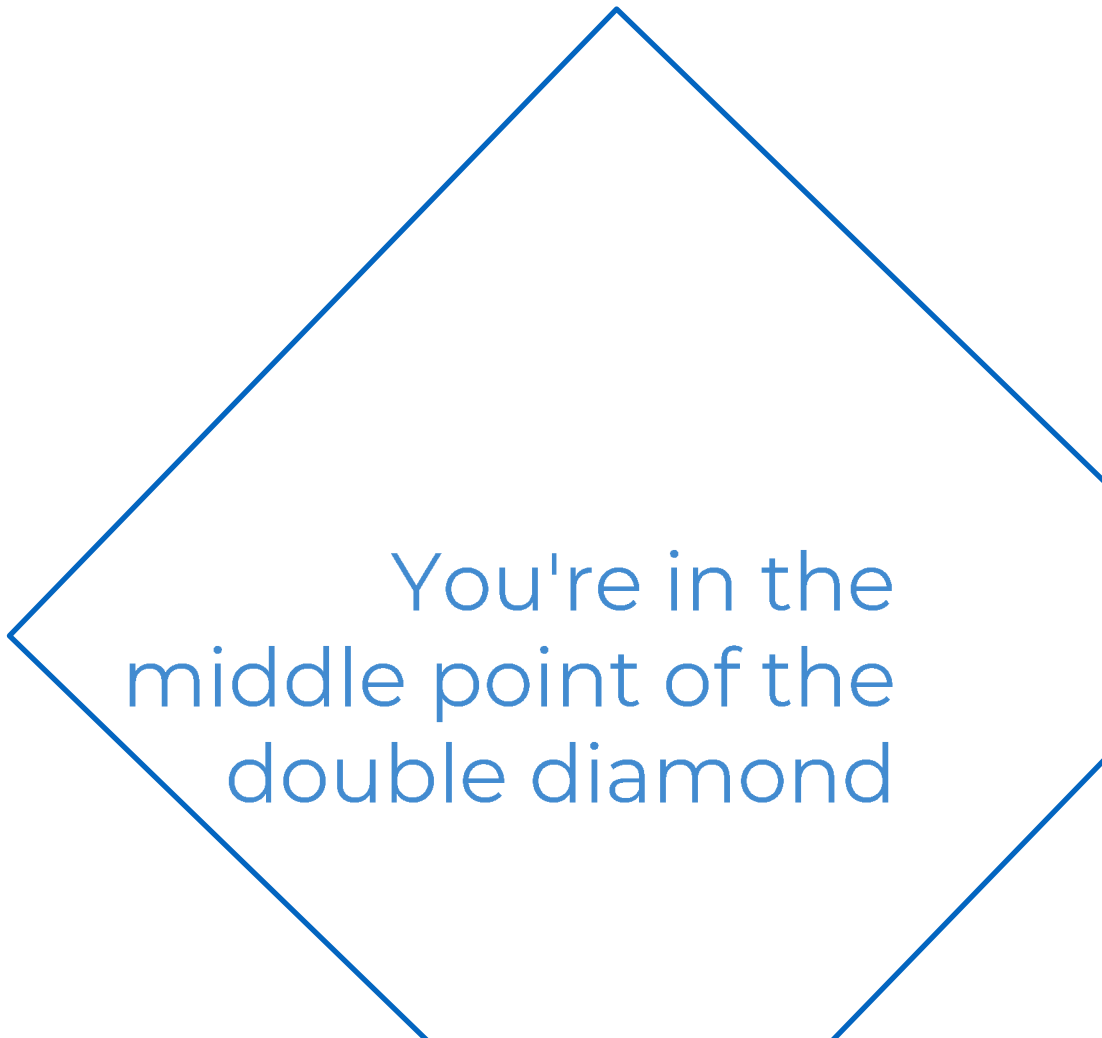
Double Diamond - Design Thinking Approach

Double Diamond Process


Write your barrier/issue statement on the top of flipchart paper

Each table to:

- 01** Individually write different factors that relate to that barrier/issue. Each factor on a different post-it.
- 02** In your group - sort your post its under different headings.
- 03** Then sort them in to fewer headings.
- 04** Then create a new problem statement based on your themes you have identified.



You're in the
middle point of the
double diamond

- 
- 1. Each person** to fold up their blank A4 paper into 6 squares (i.e. fold in half-length ways and then into 3)
 - 2. On your own draw** 6 different ideas – as pictures of possible solutions. Be as outrageous as you like, there is no right or wrong
 - 3. Share** your ideas in your table
 - 4. Select 3-4** great ideas as a full group

Thank You!
